



INSTALLATION INSTRUCTIONS

Accessory

**HAND GUARDS
P/N OSP17-KRH-A00**

Application

XR150L

Publication No.

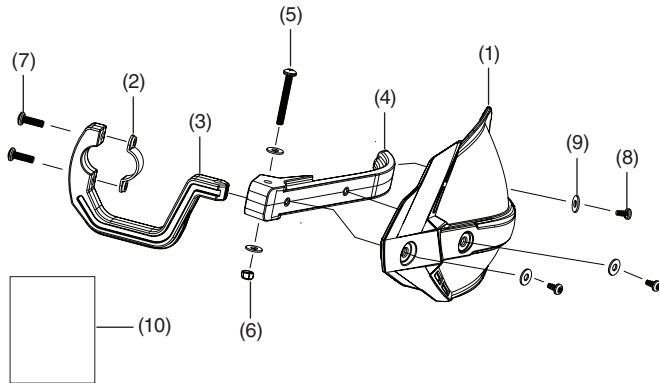
MII 17935

Issue Date

April 2023

Honda Dealer: Please give a copy of these instructions to your customer.

PARTS LIST



No.	Description	Qty.
(1)	Hand guard shield set L & R	1
(2)	Hand guard mount clamp	2
(3)	Hand guard bracket	2
(4)	Hand guard spine	2
(5)	5 × 35 mm phillips screw	2
(6)	5 mm lock nut	2
(7)	5 × 16 mm phillips screw	4
(8)	4 × 12 mm screw	6
(9)	5 × 14 mm washer	10
(10)	Installation Instructions URL	1

NOTE:

Left hand part shown - BOM qtys are for the L & R set.

TOOLS AND SUPPLIES REQUIRED

- Socket (8 mm)
- Ratchet
- Phillips screwdriver
- Torx wrench (T20)
- Torque wrench

TORQUE CHART

Tighten all screws, bolts, and nuts to their specified torque values.

Item	N-m	kgf-m	lbf-ft
5 mm lock nut	7	0.7	5.2
5 × 16 mm screw	7	0.7	5.2
4 × 12 mm tapping screw	2	0.2	1.5

INSTALLATION

NOTE: Allow the vehicle to fully cool before installing this accessory.

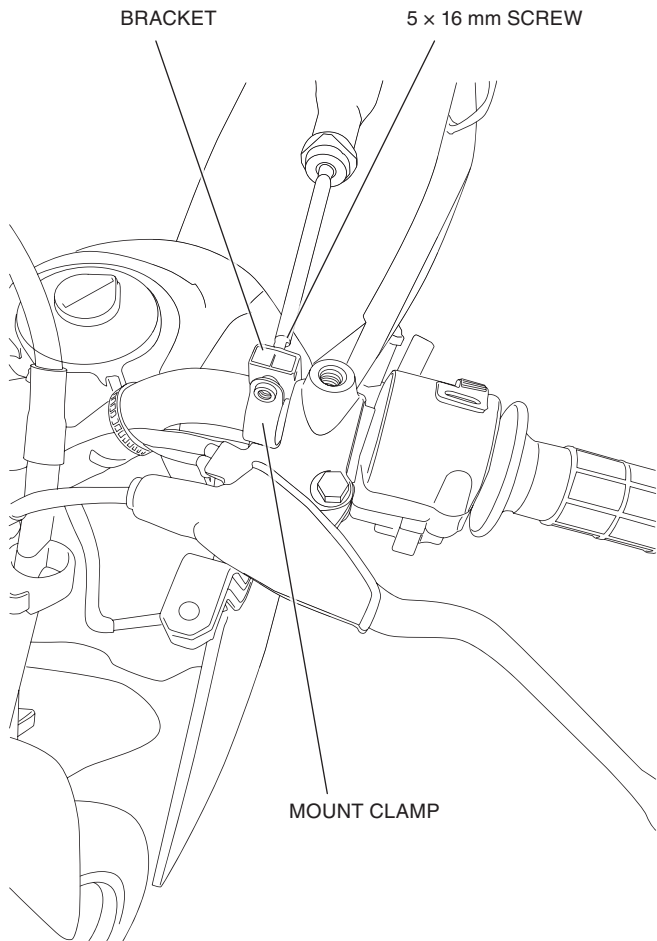
NOTE: Hand guards are designed to mount to the stock 7/8th inch handlebar.

NOTE: Hand guards are designed to protect riders hands from wind and road debris, but are not intended to withstand impacts with large objects or the ground.

1. Install hand guard bracket onto handlebars using the hand guard mount clamp and the 5 x 16 mm phillips screws.

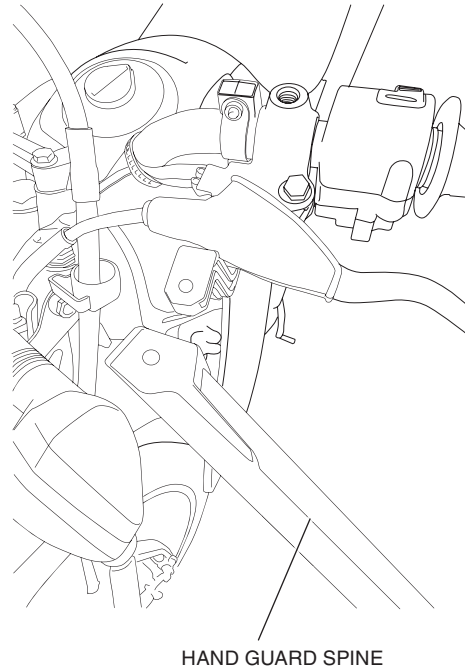
Pro tip: To get the bolts started, slide the hand guard clamp pieces inboard away from the final position in order to get more clearance to bring the mating pieces together. Then once bolts are started, make sure the clamps are slid outboard as far as possible - touching against existing lever/mirror clamps. Tighten gently enough to hold in place temporarily. The hand guard mount clamp will mount just behind the clutch and front brake levers on the handlebar.

NOTICE: The hand guard bracket should sit next to the clutch and front brake perch mounts.

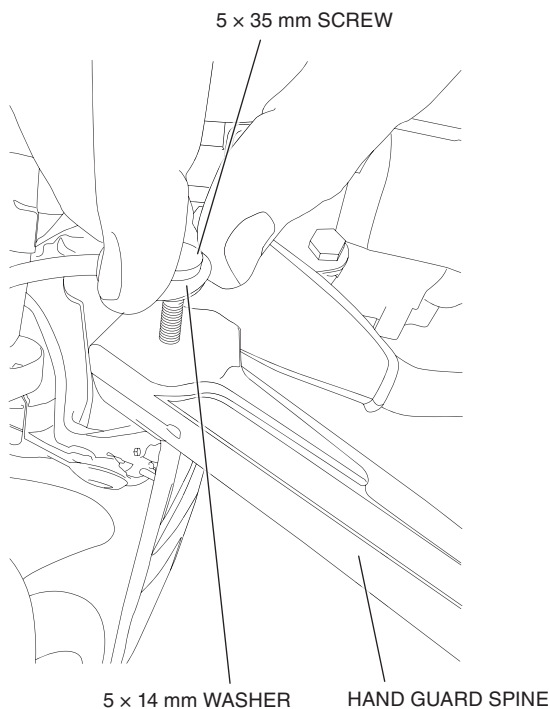


2. Slide hand guard spine over the hand guard bracket end, making sure that the holes line up.

NOTICE: The hand guard brackets and spines are not directionally dependant, each can be mounted on the clutch or brake side.

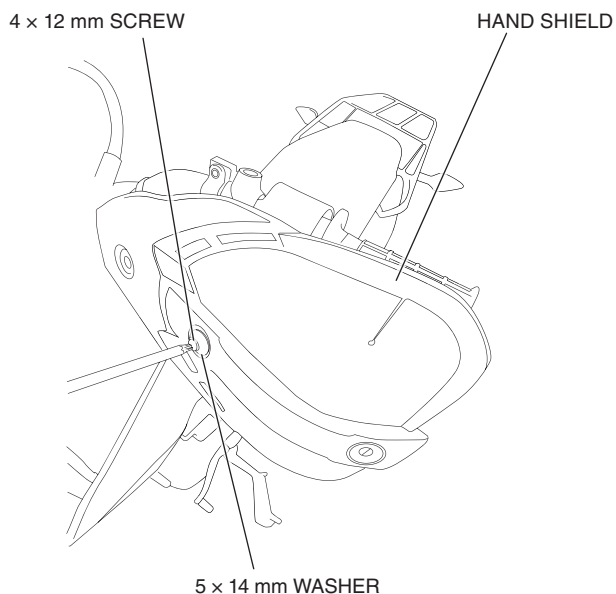


- Put one of the 5 × 14 mm washers onto the one of the 5 × 35 mm phillips screws. Insert the screw and washer through the spine and bracket. Use the lock nut and washer on the bottom of the screw to secure them both together; Tighten to 7 N·m.



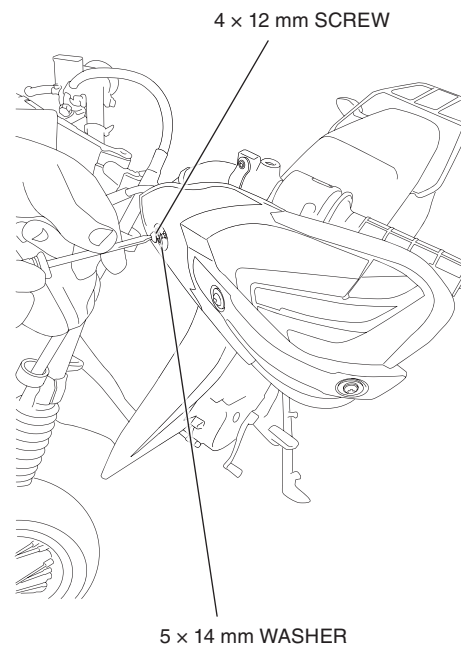
- Line up one of the hand shields with the holes on the spine. Secure the hand shields to the spine using the 4 × 12 mm screws and 5 × 14 mm washers. Start with the center mount hole first. Tighten to 2 N·m.

NOTICE: The screws will cut the threads into the spine as it goes in.



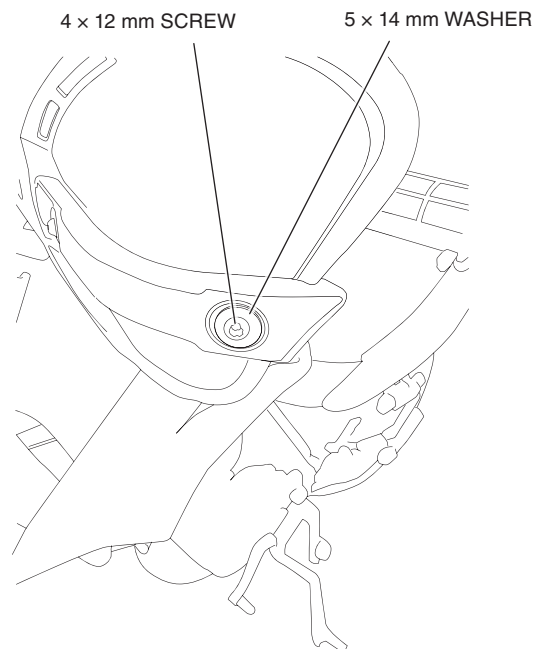
- Secure the inner most mounting point on the shield with the screw and washer. Tighten to 2 N·m.

NOTICE: The screws will cut the threads into the spine as it goes in.

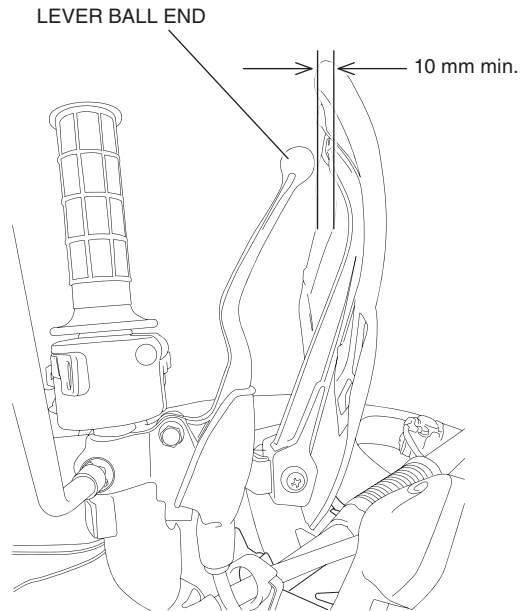


- Secure the outer most mounting point on the shield with the screw and washer. Tighten to 2 N·m.

NOTICE: the screws will cut the threads into the spine as it goes in.



- Finalize the hand guard position on the bar by rotating slightly downward past the plane of the lever. Make sure to keep at least 10 mm clearance between the ball end of the lever and any portion of the hand guard on both left and right sides. If the clearance is less than 10 mm, increase the clearance by rotating the hand guard downward. Once positioned, tighten mounting screws to 7 N-m.



- Repeat above steps to install the other side hand guard.